

Print Server

Quick Installation Guide

<h2>Table of Contents</h2>

INTRODUCTION	1
INSTALL THE HARWARE	2
INSTALL UTILITIES FOR WINDOWS 95/98	3
CONFIGURE THE PRINT SERVER	4
Network environment without file server	4
1. Setup TCP/IP environment	4
2. Install LPR print driver	7
3. Install and Configure the printer driver.....	8
Microsoft Windows NT Server environment	11
1. Configure TCP/IP for Windows NT Server	11
1-1. Windows NT 3.5x	11
1-2. Windows NT 4.x	14
2. Configure Print Server's IP address	19
3. Configure workstation	20
Novell Netware	23
1. Quick Installation program for NetWare 3.x	23
2. Quick Installation program for NetWare 4.x	25

Introduction

Thanks for purchasing this print server! The print server makes your printers become sharing device on the network and gives you Local Area Network printing flexibility and manageability-at a low cost, and with an absolute minimum of setup and maintenance required.

There are five models in the print server series, they include the 3-port and 1-port models, with 10Mbps or 10/100Mbps network interface. Some of them can attach to your printer directly and others are standalone models. Please refer to the hardware manual to see the specification of the print server you bought.

With TCP/IP and IPX/SPX multiple protocols support, this print server works in all leading network operating systems including Microsoft Windows 95/98/NT, Novell NetWare and Unix. Easy-to-use is another design focus of this print server. Many features are added to make it truly plug and play devices such as DHCP server/client auto-detection for IP address assignment, auto-sensing network speed, quick setup utility for NetWare, and simple management through standard Internet browser. The fault-tolerant upgrade design ensures a smooth firmware upgrade if needed.

This guide is used for quick installation. If you have a simple network you can just follow the procedures described in this guide step by step to complete the installation. If you find and problem, please refer to the user's manual to get more detail information.

Install Hardware

STEP 1 Unpack the print server package you will see the following :

- One print server
- One power adapter
- Two manuals
- Four diskettes

STEP 2 Connect the print server to the printer you want to share on the network.

A) Direct attachment model

For direct attachment models, you can connect the print server to the printer's centronic port directly.

B) Standalone model

For standalone models, you may need a DB-25 to centronic printer cable to connect this print server to the printer. Connect the DB-25 male connector of the cable to the print server and connect the centronic connector to the printer.

STEP 3 Connect the power adapter to the print server.

STEP 4 Connect the network cable to the print server. If the network is active, the network LED will lit.

[PS] Please check the hardware manual for the detail spec and information.

Install Utilities for Windows 95/98/NT

STEP 1 Please run the setup program in the 'Print Server Utilities for Windows 95/98/NT' diskette.

STEP 2 You will see the following screen, please follow the wizard to Install the utilities.



Configure the Print Server

Network environment without file server

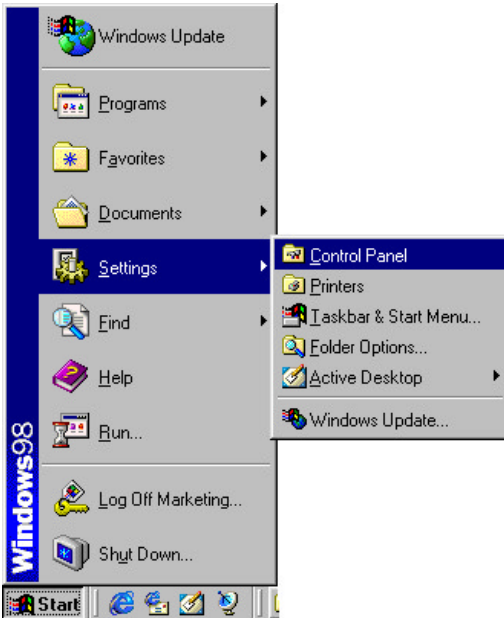
(Windows 95/98 or Windows NT Workstation via TCP/IP protocol)



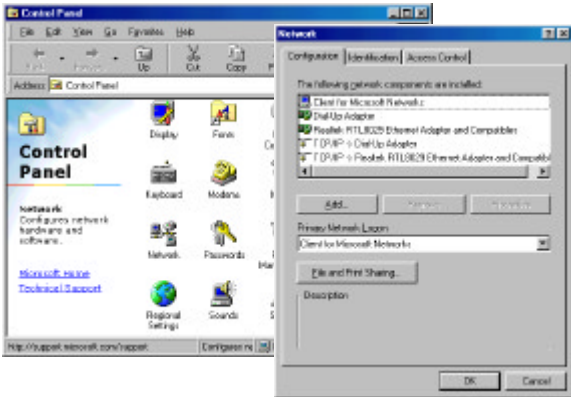
1. Setup TCP/IP environment

STEP 1 Please confirm the PC has installed the TCP/IP protocol

- 1) From "Start" menu, please choose "Setting" then "Control Panel"



- 2) Choose 'Network' from 'Control Panel'



- 3) Please check if the "TCP/IP Protocols" has been installed. If not, please insert the Windows 95/98 CD-ROM and refer to Windows 95/98 users manual to install TCP/IP protocol.
- 4) Select "TCP/IP -> (LAN Adapter)" and click the "Property" Button

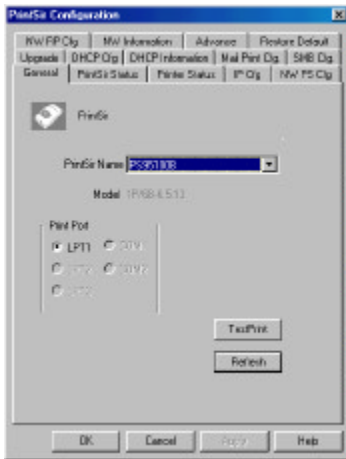


- 5) If you do not have any IP address configuration on your network or have a DHCP server already, please select the "Get IP address automatically" in the "IP Address" page. If you have specify a IP address for this computer, please select "Assign IP address" in the "IP Address" page then input the "IP Address" and "Subnet Mask". Also choose the "Gateway" page and assign the IP address of the default gateway. After configure all the parameters, please click "OK".

- 6) Click "OK" in the "Network" dialog box.

STEP 2 Configure the IP address of the print server

- 1) If you do not have any IP address configuration on your network and set the PC to be "Get IP address automatically", you do not have to configure the IP address of the print server, because it will set to be "DHCP server" automatically. Skip this step and go to "2. Install LPR print driver" directly.
(Every computer on the network has to reboot after the print server boot up so that it can get the IP address from the print server -- the DHCP server)
- 2) If there is DHCP server on your network and you want the print server to get IP address from the DHCP server, you do not have to configure the print server too. Skip this step and go to "2. Install LPR print driver" directly.
- 3) If you reserve one IP address for the print server, please run the "Windows 95/98 Utility" for the print server.



- 4) Select the print server from the pull down menu.
(If you do not configure the name of the print server, you will see the default name of the print server. It is printed on the bottom of the print server.
- 5) Choose "IP Cfg" page and select "Manual" then type in the "IP Address", "Gateway" and "SubNet Mask".



6) Click the "Write" button to write the configuration into the print server then click "Reset" to reboot the print server. Close the "Windows 95/98 Utility".

2. Install LPR print driver

STEP 1 Run the setup program from the "LPR Driver for Windows 95/98" diskette.

STEP 2 Please follow the instruction of the setup wizard. After finish the installation, please reboot the computer.



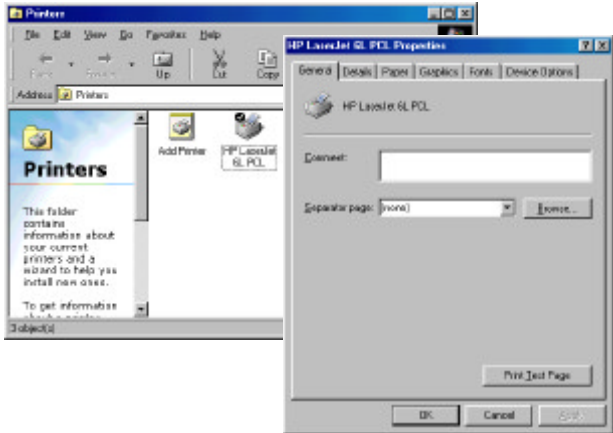
3. Install and configure the printer driver

STEP 1 Install the printer driver.

- 1) Please refer to Windows 95/98 users manual to install the printer driver.

STEP 2 Configure the printer driver.

- 1) From 'Start' menu, please choose 'Setting' then 'Printer'.

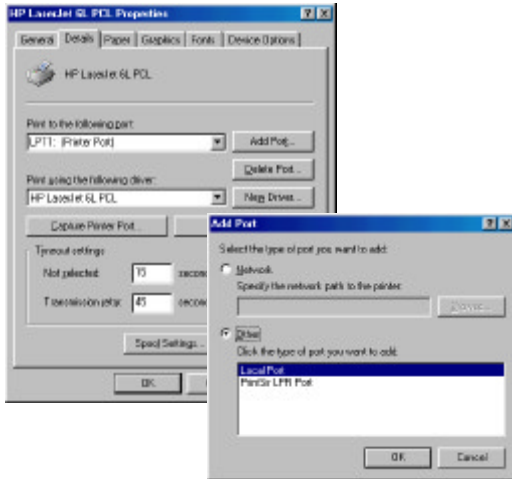


- 2) Choose the printer that is connected on the print server. From the top menu item 'File' choose the 'Property'. You will see the 'Printer Property' dialog box.

- 3) Select 'Detail' page.

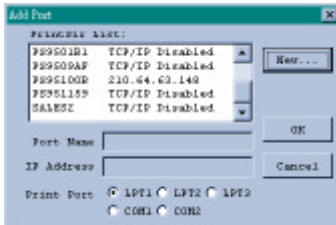


- 4) Click the "Add Port" button, you will see the following dialog box. Select 'Others' then choose 'PrintSir LPR Port'. Click the 'OK' button.



- 5) You can see all the available print server in the "Add Port" dialog box, please choose the print server this printer connect to. Click "OK".

(If you do not configure the name of the print server, you will see the default name of the print server. It is printed on the bottom of the print server.)

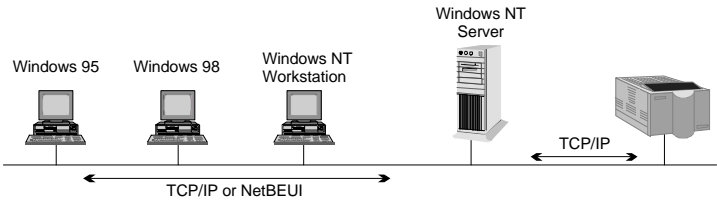


- 6) If the print server does not appear in the list for some reason, please add it manually. Click the "New..." button in the "Add Port" dialog, input the print server name and IP address. Click "OK" button.



7) Click the "OK" button in the "Printer Property" dialog box.

Microsoft Windows NT Server environment

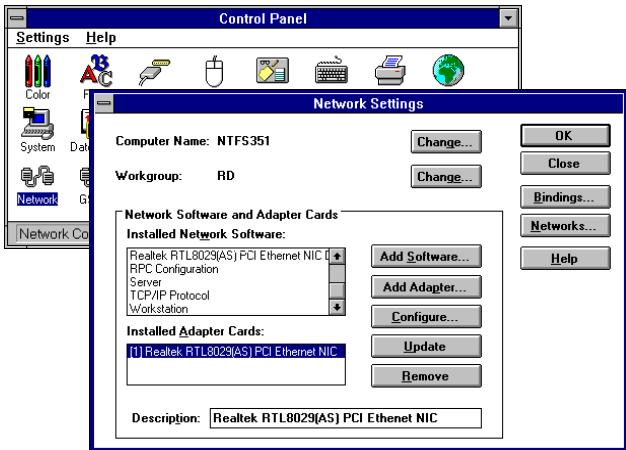


1. Configure TCP/IP for Windows NT Server

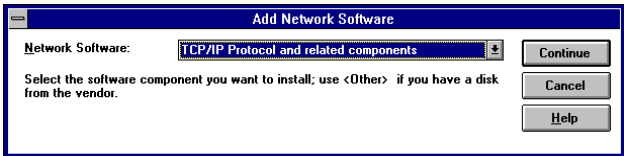
1-1. Windows NT Server 3.5x

STEP 1 Confirm the Windows NT Server has installed the TCP/IP protocol

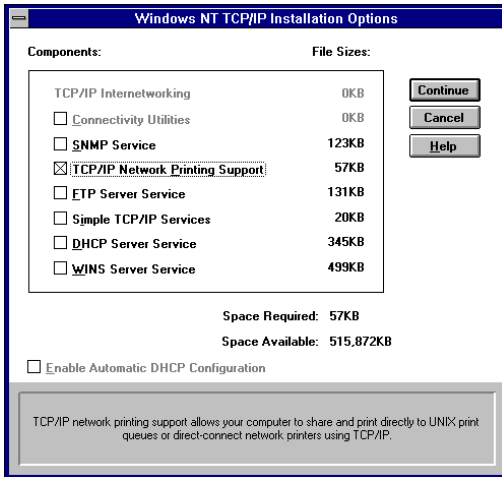
- 1) Run the 'Network' icon from the 'Control Panel', you will see the 'Network Settings' dialog box.



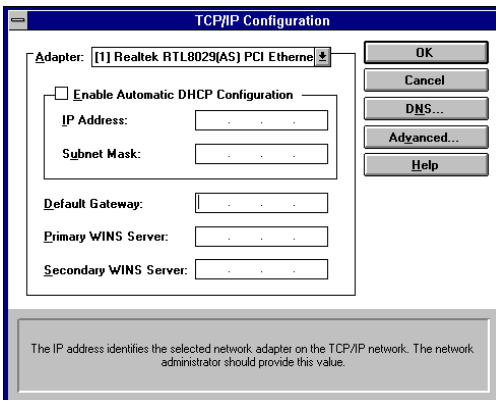
- 2) Check if there is "TCP/IP Protocol" in the 'Installed Network Software' list box. If not, you have to add the TCP/IP protocol.
- 3) Click "Add Software..." button.
- 4) Choose the "TCP/IP Protocol And Related Components" from the pull down list box then click "Continue" button.



5) Select the "TCP/IP Printing" and click "Continue" button.

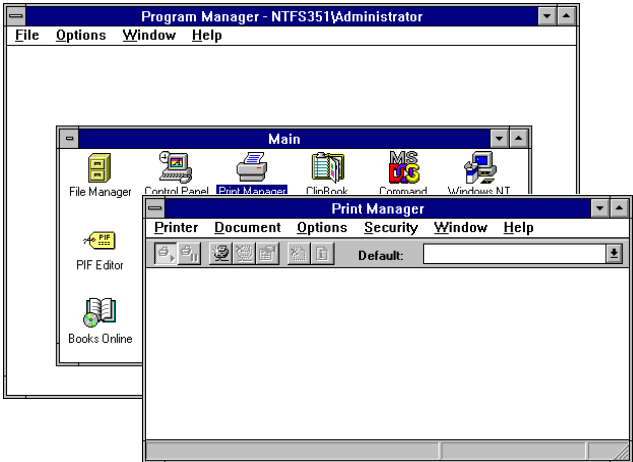


6) Click the "OK" button in the "Network Setting" dialog box, you will see the "TCP/IP Configuration" dialog box. Please refer to the Windows NT users manual to configure the IP address of this server.

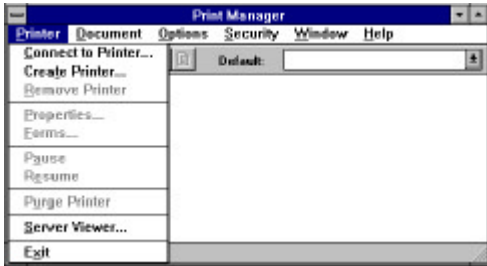


STEP 2 Configure the LPR driver for Windows NT Server

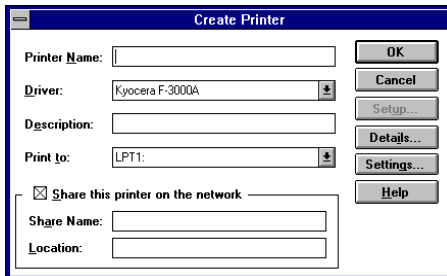
- 1) Run the "Main" icon from the "Program Manager" window then run the "Printer Manager"



- 2) Choose "Create Printer" from the "Printer" pull down menu.



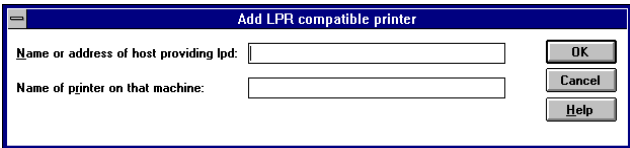
- 3) Input the printer name in the "Printer Name" field and select the appropriate driver from the "Driver" pull down list.



- 4) Select the "Share this printer on the network" and type in the name for the printer you want to show on the network in the "Share Name" field.
- 5) Select "Others..." in the "Print To" pull down list then choose "LPR Port" in the dialog box. Click "OK"



- 6) Type in the IP address of the print server in the first field and type in the print port (lpt1, lpt2 or lpt3) in the second field. Click "OK" button.

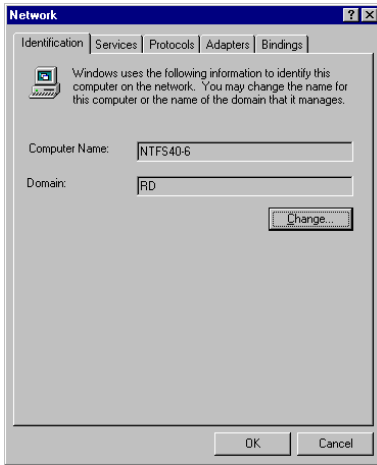


- 7) Click the "OK" button in the "Create Printer" dialog box to complete the configuration.
- 8) If you use a multiport print server, please repeat the procedure to configure every printer respectively.

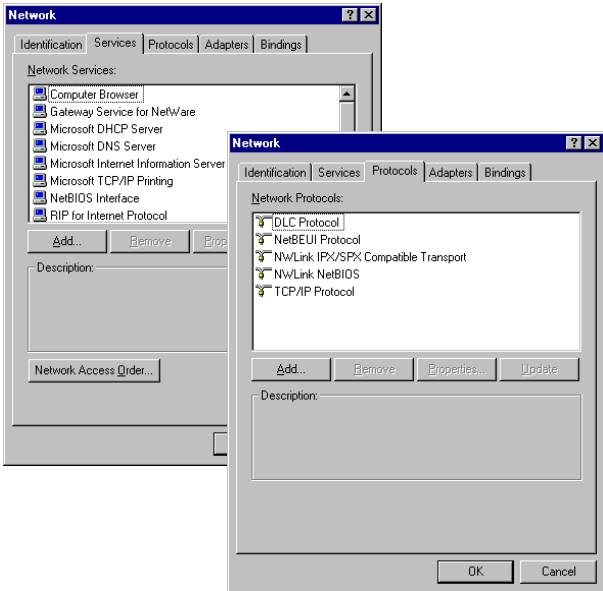
1-2. Windows NT Server 4.x

STEP 1 Confirm the Windows NT Server has installed the TCP/IP protocol

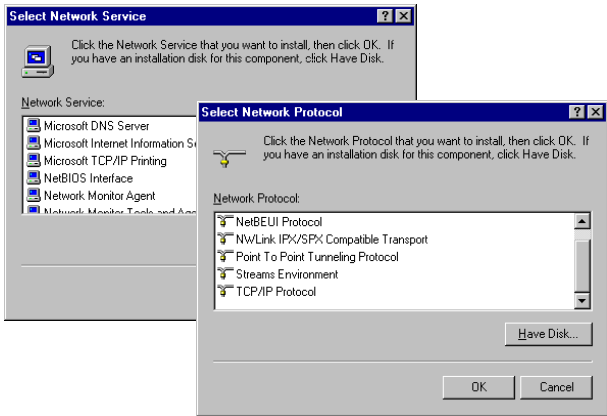
- 1) Run the "Network" icon from the "Control Panel", you will see the "Network" dialog box.



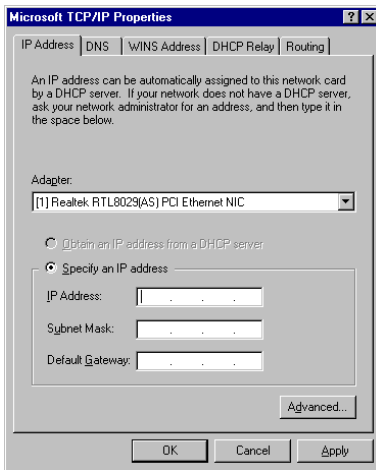
- 2) Please check if there are "Microsoft TCP/IP Printing" in the "Services" page and "TCP/IP Protocol" in the "Protocols" page. If there exists, please go to step 2 directly.



- 3) You have to install “TCP/IP Protocol” and “Microsoft TCP/IP Printing”. Please click “Add” button to add these two drivers.

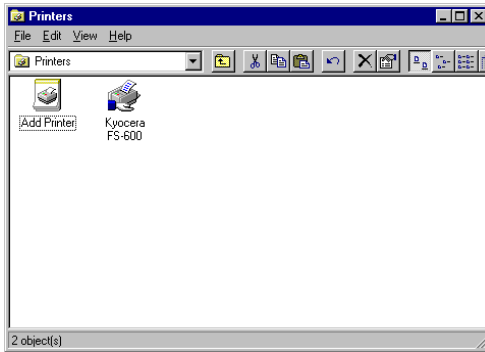


- 4) When you add “TCP/IP Protocol” you will see the dialog box for configuring the IP address of this server. Please input the “IP Address”, “Subnet Mask” and “Default Gateway” for this server.

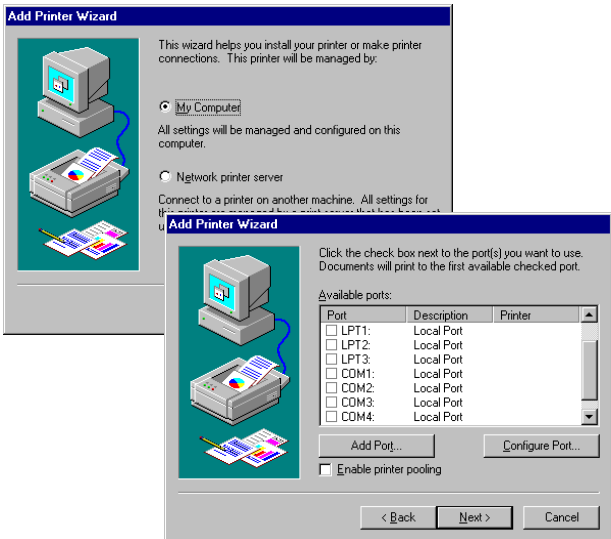


STEP 2 Configure the LPR driver for Windows NT Server

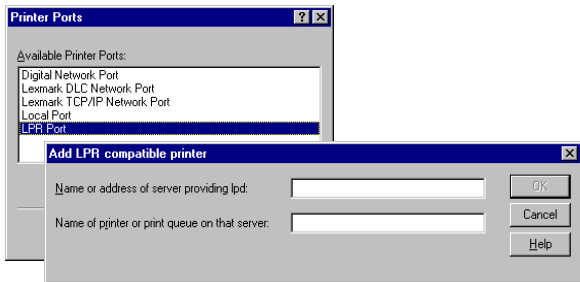
- 1) From "Start" menu, please choose "Setting" then "Printer".
Run the "Add New Printer" icon.



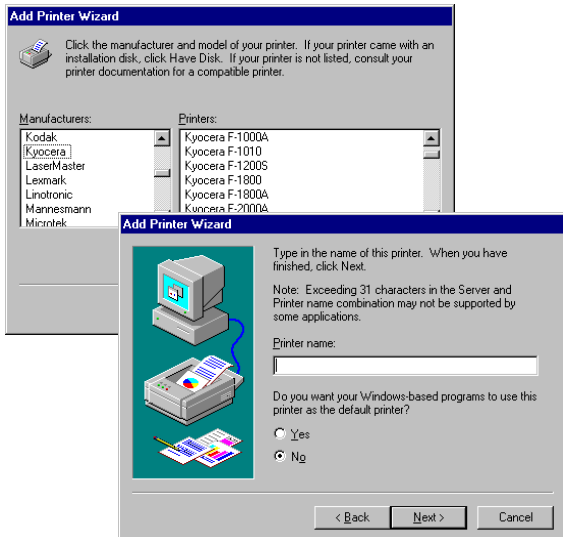
- 2) Select "My Computer" from "Add Printer Wizard" dialog box, click "Next" button then click "Add Port ..." button.

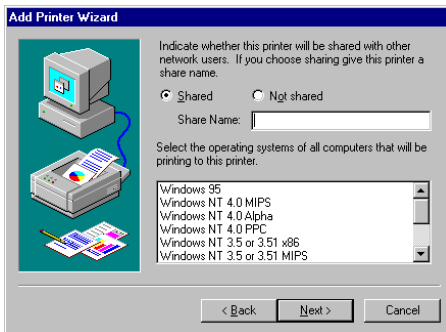


- 3) Choose "LPR Port" and click "New Port" button. Please input the print server's IP address in the first field and input the print port name (lpt1, lpt2 or lpt3) in the second field. Click "OK" button.



- 4) Click the "Close" button to close the "Print Port" dialog box.
- 5) Click "Next" button in the "Add Printer Wizard" dialog box, choose appropriate printer driver then input the name of this printer. Select "Shared" and input the "Share Name" for this printer.

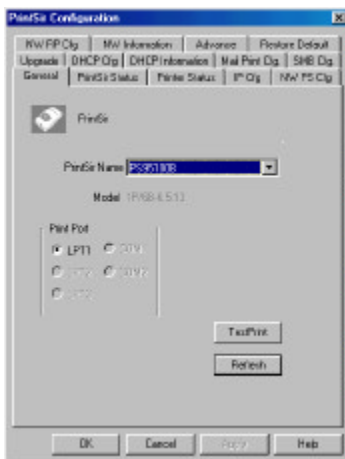




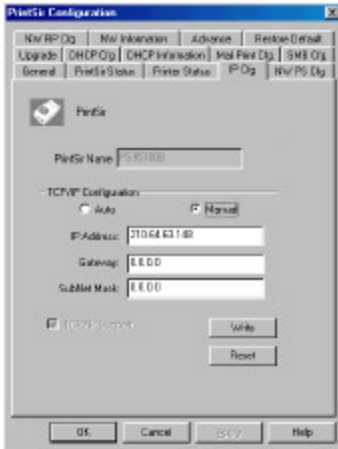
6) If you use a multiport print server, please repeat the procedure to configure every printer respectively.

2. Configure the IP address of the print server

- 1) If there is DHCP server on your network and you want the print server to get IP address from the DHCP server, you do not have to configure the print server. Go to "3. Configure workstation" directly.
- 2) If you reserve one IP address for the print server, please run the "Windows 95/98 Utility" for the print server.



- 3) Select the print server from the pull down menu.
(If you do not configure the name of the print server, you will see the default name of the print server. It is printed on the bottom of the print server.
- 4) Choose "IP Cfg" page and select "Manual" then type in the "IP Address", "Gateway" and "SubNet Mask".



- 5) Click the "Write" button to write the configuration into the print server then click "Reset" to reboot the print server. Close the "Windows 95/98 Utility".

3. Configure workstation

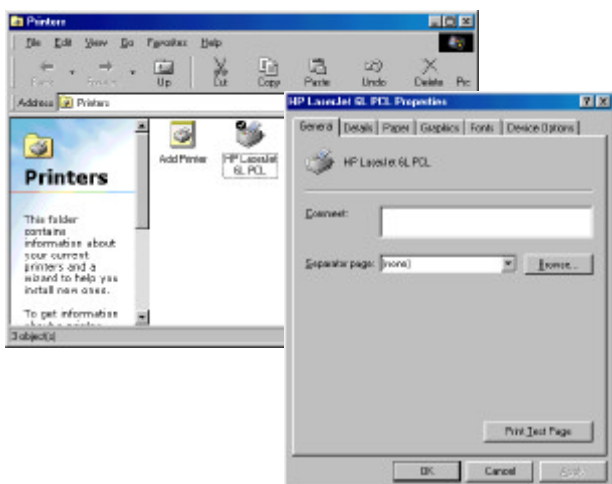
STEP 1 Install the printer driver.

- 1) Please refer to Windows 95/98 users manual to install the printer driver.

STEP 2 Configure the printer driver.

- 1) From "Start" menu, please choose "Setting" then "Printer".

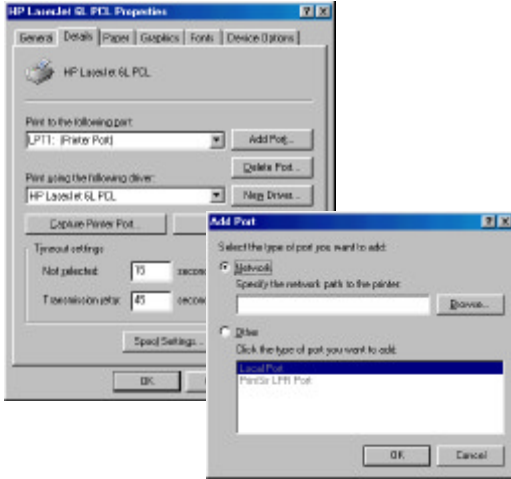
- 2) Choose the printer that is connected on the print server. From the top menu item "File" choose the "Property". You will see the "Printer Property" dialog box.



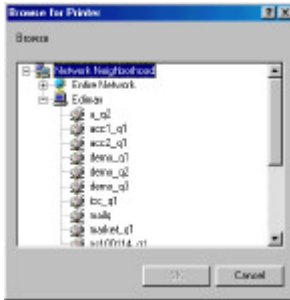
- 3) Select 'Detail' page.



- 4) Click the “Add Port” button, you will see the following dialog box. Select ‘Network’ then click ‘Browse’ button.

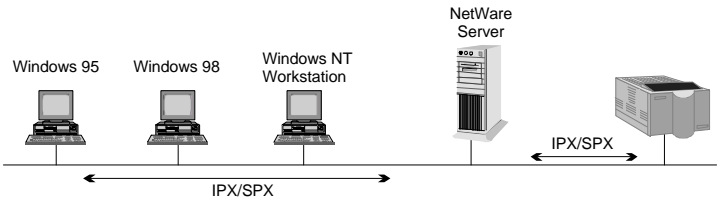


- 5) In the ‘Browse Printer’ dialog box you can click the file server to see related print servers. Please choose the print server you want to connect and click ‘OK’ button.
(If you do not configure the name of the print server, you will see the default name of the print server. It is printed on the bottom of the print server.)



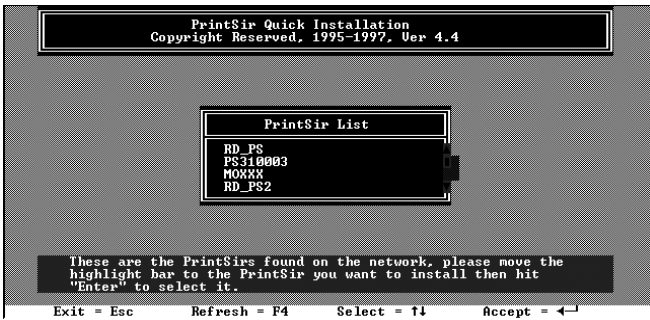
- 6) Click the “OK” button in the ‘Printer Property’ dialog box.

Novell NetWare environment

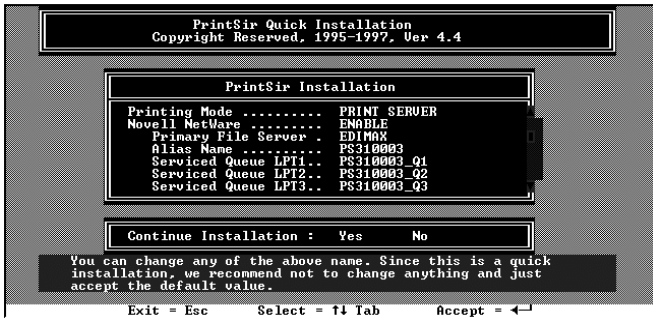


1. Quick Installation program for NetWare 3.x

- 1) Log in to your NetWare server as SUPERVISOR.
- 2) Insert the floppy disk included with the print server, and change to the appropriate drive (A: or B:). Please make sure the diskette is writable, or copy all of the files on the diskette to a sub-directory on your hard disk drive before starting the installation.
- 3) Run the INSTALL program.
- 4) Select your new print server from the displayed list and press Enter. The name listed will be the same as the Device Name printed on a label on your print server.



- 5) A list of defaults will be displayed. If you need to change any of these items, use the arrow keys to choose the item you need to change, then press Enter to display a list of choices. When all of the values are correct, select the Continue Installation item and press Enter.



- 6) The quick installation program will set up the print server, and when the setup is complete, it will also create a file called PRINTSIR.BAT that you can run after logging in to the file server to redirect print commands to the new print server. A sample PRINTSIR.BAT file is shown below:

```
capture /S=III /Q=PRINTSIR_Q1 /nt /nff /nb /l=1 /ti=10
```

This redirects the LPT1 port (/l=1) to the print queue PRINTSIR_Q1 on the file server named III. No banner page will be printed (/nb), no form feed (blank page) will be added to the end of the job (/nff), and tabs will not be expanded into spaces (/nt). If the program does not explicitly signal end-of-job, the capture facility will wait 10 seconds (/ti=10) before assuming that the print job is complete.

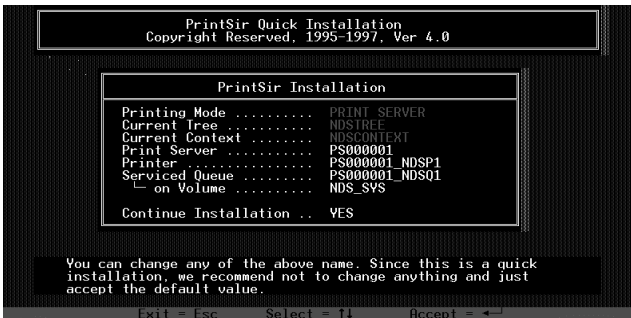
- 7) Reset the print server to have the changes take effect.

2. Quick Installation program for NetWare 4.x

- 1) Log in to your NetWare server as ADMIN.
- 2) Insert the floppy disk and change to the appropriate drive (A: or B:). Please make sure the diskette is writable, or copy all of the files on the diskette to a sub-directory on your hard disk drive before starting the installation.
- 3) Run the INSTALL program.
- 4) Choose your new print server from the displayed list and press Enter. The name listed will be the same as the Device Name printed on a label at your print server.



- 5) A list of defaults will be displayed. If you need to change any of these items, use the arrow keys to choose the item you need to change, then press Enter to display a list of choices. When all of the values are correct, select the Continue Installation item and press Enter. The Current Tree and Current Context settings cannot be changed from within the INSTALL program. If you need to change the tree or context where the print server will be installed, use the CX command to change them before starting INSTALL.



- 6) The quick installation program will set up the print server, and when the setup is complete, it will also create a file called PRINTSIR.BAT which you can run after logging in to the file server to redirect print commands to the new print server. A sample PRINTSIR.BAT file is shown below:

```
capture /S=III /Q=PRINTSIR_Q1 /nt /nff /nb /l=1 /ti=10
```

This redirects the LPT1 port (/l=1) to the print queue PRINTSIR_Q1 on the file server named III. No banner page will be printed (/nb), no form feed (blank page) will be added to the end of the job (/nff), and tabs will not be expanded into spaces (/nt). If the program does not explicitly signal end-of-job, the capture facility will wait 10 seconds (/ti=10) before assuming that the print job is complete.

- 7) Reset the print server to have the changes take effect.